

Spring Issue 1995

MATAWAN-ABERDEEN
HOMETOWN SHOPPER™

Welcome To Matawan!



MATAWAN HOUSE MATAWAN N. J

THE MATAWAN HOUSE

*built in the 1850's
Main Street, Matawan, New Jersey*

See page 4 for other places to lodge over 100 years ago!

**MATAWAN-ABERDEEN
HOMETOWN
SHOPPER™**

P.O. Box No. 8
Matawan, NJ 07747
(908) 566-6637
Fax (908) 566-6318

Published Quarterly by:

**JR ADVERTISING
& CONSULTING INC.**

Matawan, NJ

Publisher-Editor
Joan Roum

Contributing Editor
Kevin Roum

**Spring Issue
March 1995
Volume V, Issue II**

Did You Know?

The Hawkins House, built before 1700, is the oldest structure in Matawan. It stands along with the Poet's Inn, on what were originally 24 lots, on the north side of Mill Road.

The house was used as a tavern during and after the Revolutionary War. During the Civil War, the house was a link for the Underground Railroad with slaves being hidden in a small hole under the kitchen floor.

Member of the
Matawan-Aberdeen
Chamber of Commerce

Member of the
Matawan Historical
Society

All advertising and features, including artwork, layout and design remain sole property of the Matawan Aberdeen-Hometown Shopper and may not be reproduced without written permission of the publisher.

**Places to Lodge on Main Street, Matawan
Over 100 Years Ago**

By Kevin Roum

If you were to get off a train at the Matawan Train Station in 1895 instead of 1995, you would see more than just the obvious changes that have happened over the course of a century. The most remarkable thing about that part of Main Street that is missing today are the



The Old Homestead, Matawan, N. J.

THE OLD HOMESTEAD
Matawan, New Jersey

hotels and inns that lined the street near the station. Some of the hotels included the Woodbine, The Aberdeen Inn, The Matawan House, and The Homestead. These hotels served both vacationers in town for the nearby shore attractions, as well as businessmen who were in town to call on their customers or sell their wares.

One of the oldest inns, The Matawan House, was built in the 1850's. This was a three story white building with green trim and a porch running the length of the house on the first two floors. Besides sleeping quarters for the guests, the ground floor

of the Matawan House held a family room, a bar room, a game room where card games were almost continuously going on, as well as a dining room and a long elegant parlor for women to drink in since they were not permitted in the bar.

Across from the railroad station stood a three story brick building called The Aberdeen Inn.

This more pretentious hotel, built in 1891, had stairs on both sides of the building leading to a porch on the second floor. Due to its proximity to the train station, The Aberdeen Inn was a natural spot for travelers to gather while waiting for a later train. Of course, the trains didn't run as frequently as they do today, so it was not uncommon for travelers to wait half a day for a connecting train.

The hotels in Matawan served as host to many well-known and important people throughout their years. Some of their guests included:

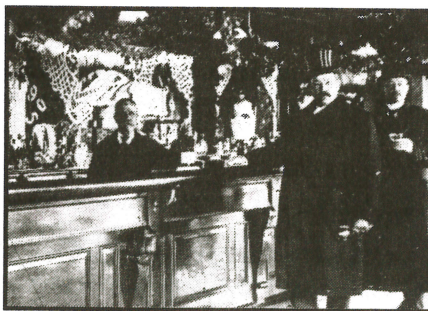
President Grover Cleveland, Edith Roosevelt, the wife of President Theodore Roosevelt, and several governors of New Jersey. The early 1920's marked the end of the life for the inns of

Matawan. As automobiles became more available, the need for overnight stays deteriorated. More important, however, was the passing of the 18th Amendment prohibiting the sale of alcohol. Without the barrooms in the hotels as a central gathering place, the customers all but disappeared. In the summer of 1930, The Aberdeen Inn was torn down in the name of progress; to erect a new store and office building.

— Historical Photos courtesy of Les Horner, Freelance Photographer and The Matawan Historical Society



ABERDEEN INN
Matawan, New Jersey



ABERDEEN INN BARROOM — 1906
Is this Gentleman with the top hat Grover Cleveland?